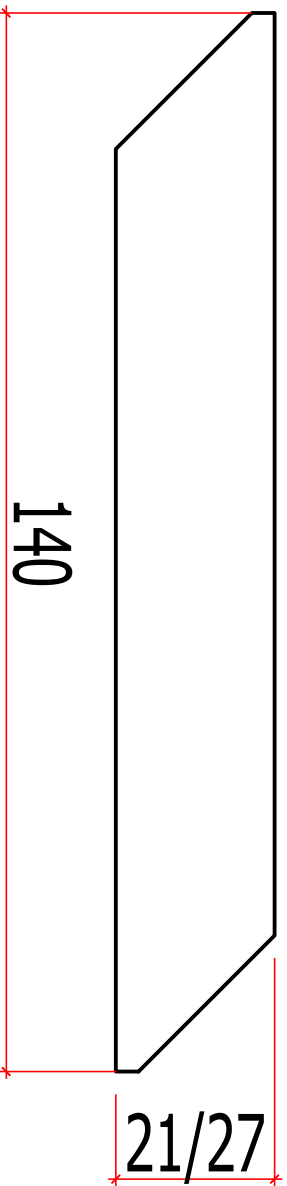


# LAME CHANT INCLINÉ

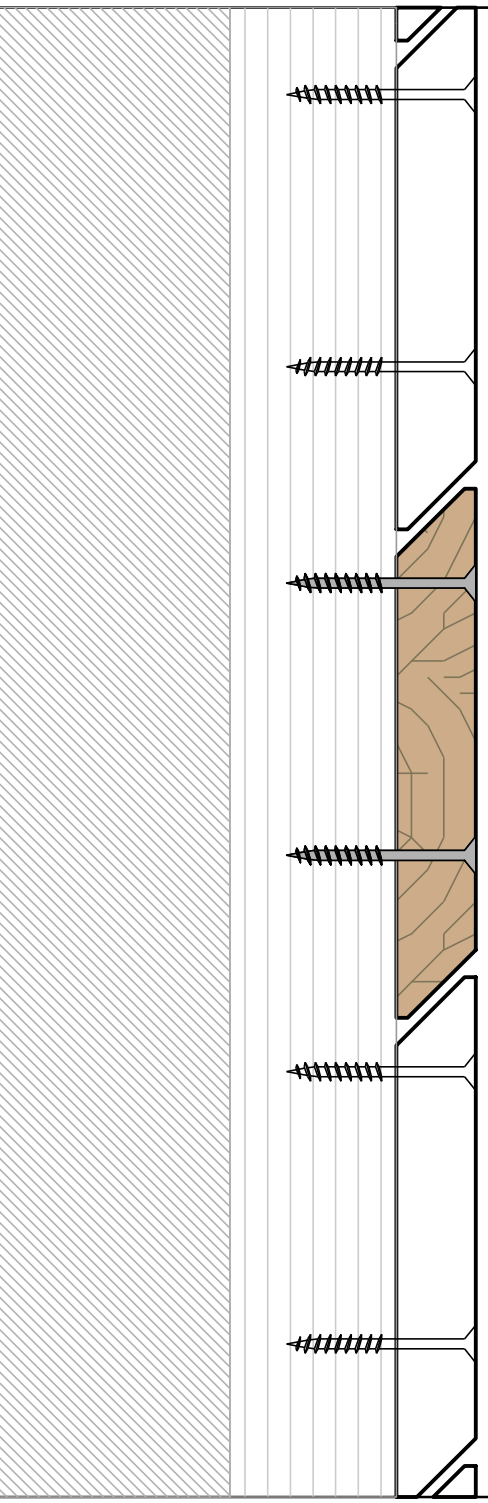
Essence :



Essence	Traitement	Épaisseur	Largeur	Longueur
DOUGLAS	non traité / HA - CL3	21mm	140mm	3/4/5m
	● - CL3	21mm	140mm	3/4/5m
	non traité / HA - CL3	27mm	140mm	3/4/5m
PIN	● - CL3	27mm	140mm	3/4/5m
	● - CL4	21mm	140mm	3/4/5m
	● - CL4	27mm	140mm	3/4/5m

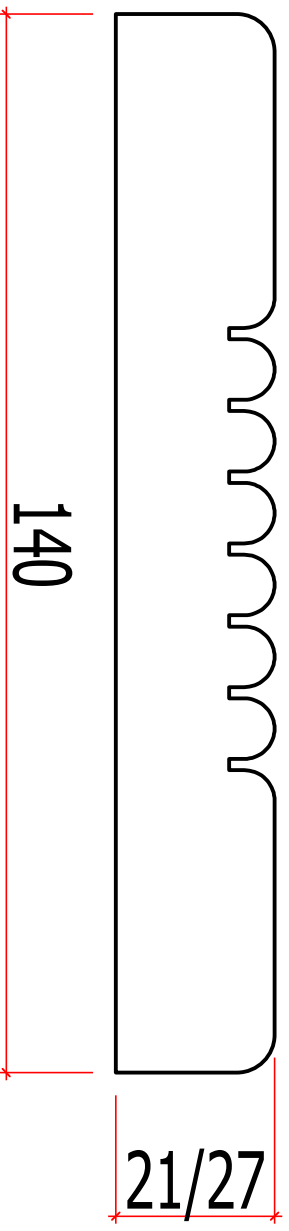
HA - Hors aubier (L'aubier est la partie tendre et blanche du bois.)

● - Traitement autoclave



# LAME GROSSE RAINURE

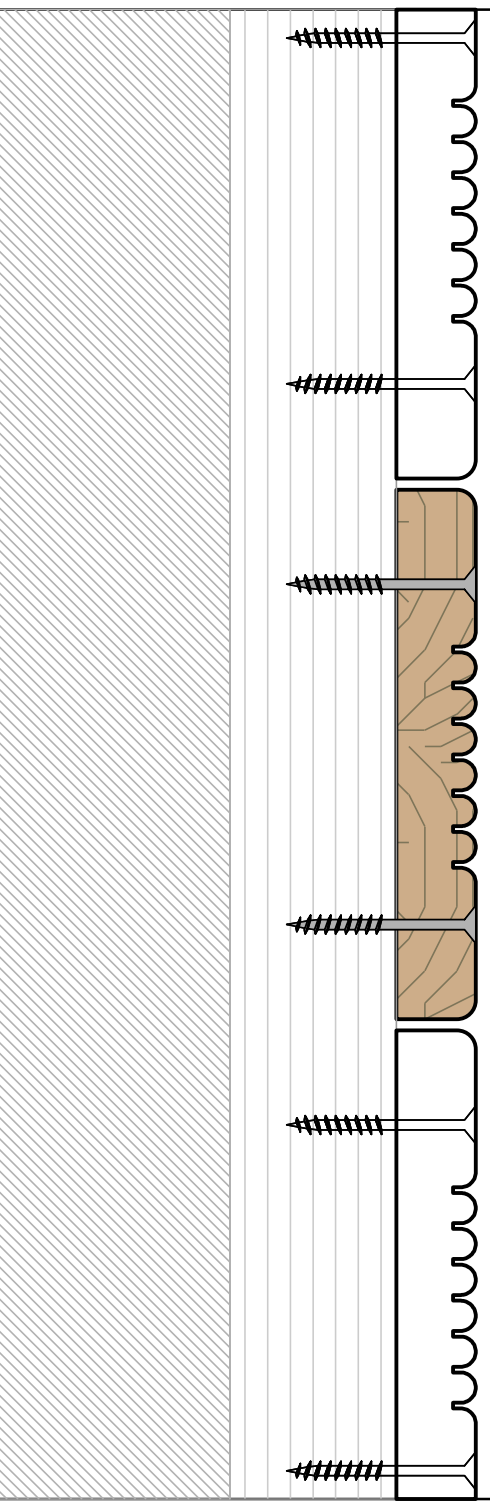
Essence :



Essence	Traitement	Épaisseur	Largeur	Longueur
DOUGLAS	non traité / HA - CL3	21mm	140mm	3/4/5m
	● - CL3	21mm	140mm	3/4/5m
	non traité / HA - CL3	27mm	140mm	3/4/5m
PIN	● - CL3	27mm	140mm	3/4/5m
	● - CL4	21mm	140mm	3/4/5m
	● - CL4	27mm	140mm	3/4/5m

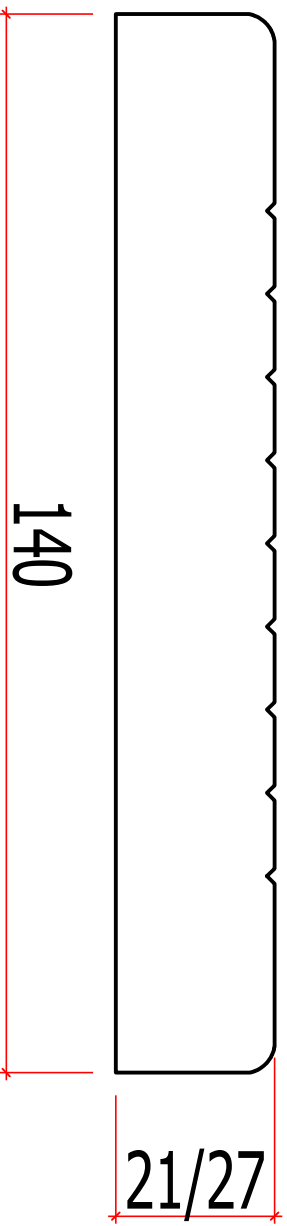
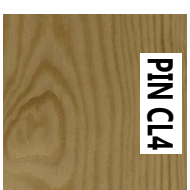
HA - Hors aubier (L'aubier est la partie tendre et blanche du bois.)

● - Traitement autoclave



# LAME 9 RAINURES

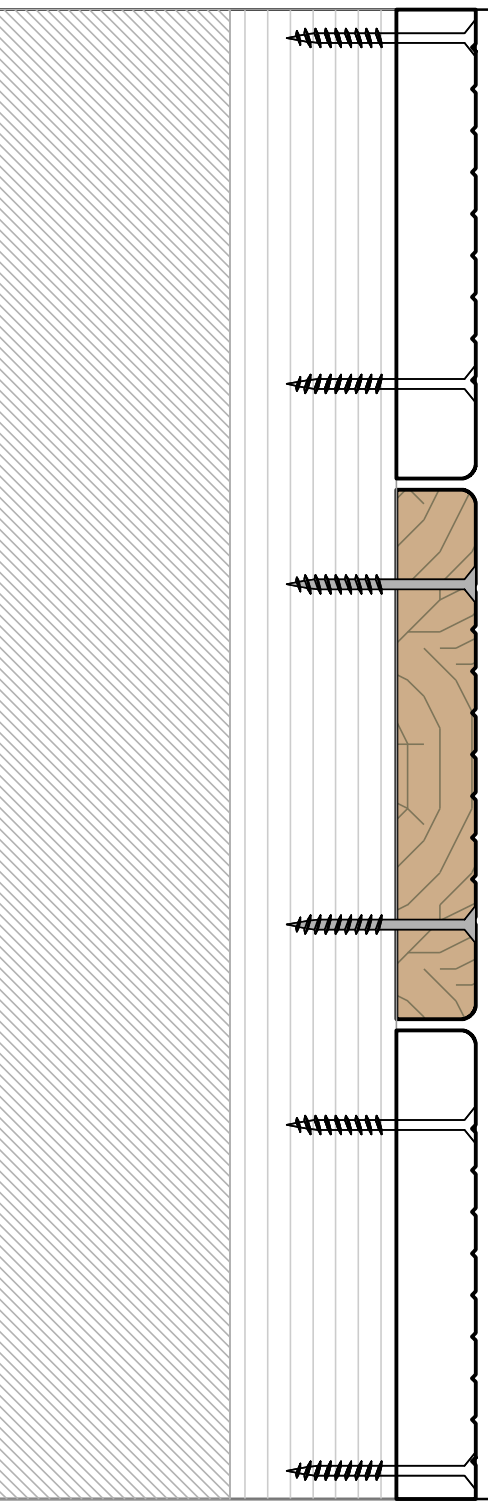
Essence :



Essence	Traitement	Épaisseur	Largeur	Longueur
DOUGLAS	non traité / HA - CL3	21mm	140mm	3/4/5m
	● - CL3	21mm	140mm	3/4/5m
	non traité / HA - CL3	27mm	140mm	3/4/5m
PIN	● - CL3	27mm	140mm	3/4/5m
	● - CL4	21mm	140mm	3/4/5m
	● - CL4	27mm	140mm	3/4/5m

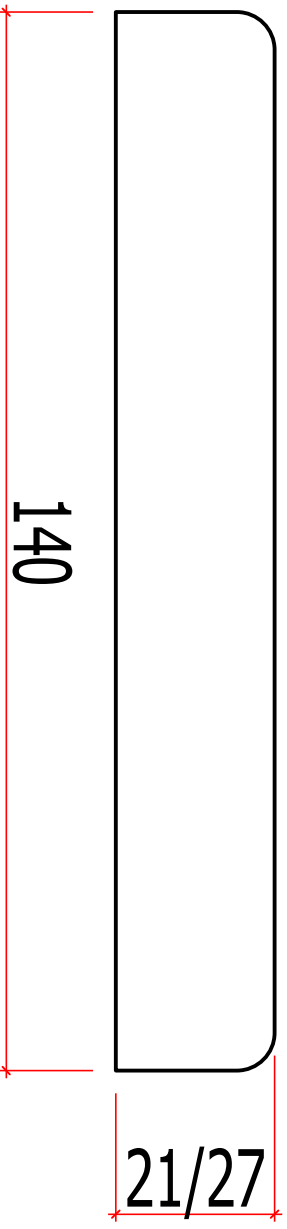
HA - Hors Aubier (L'aubier est la partie tendre et blanche du bois.)

● - Traitement autoclave



# LAME 2 ARRONDIS

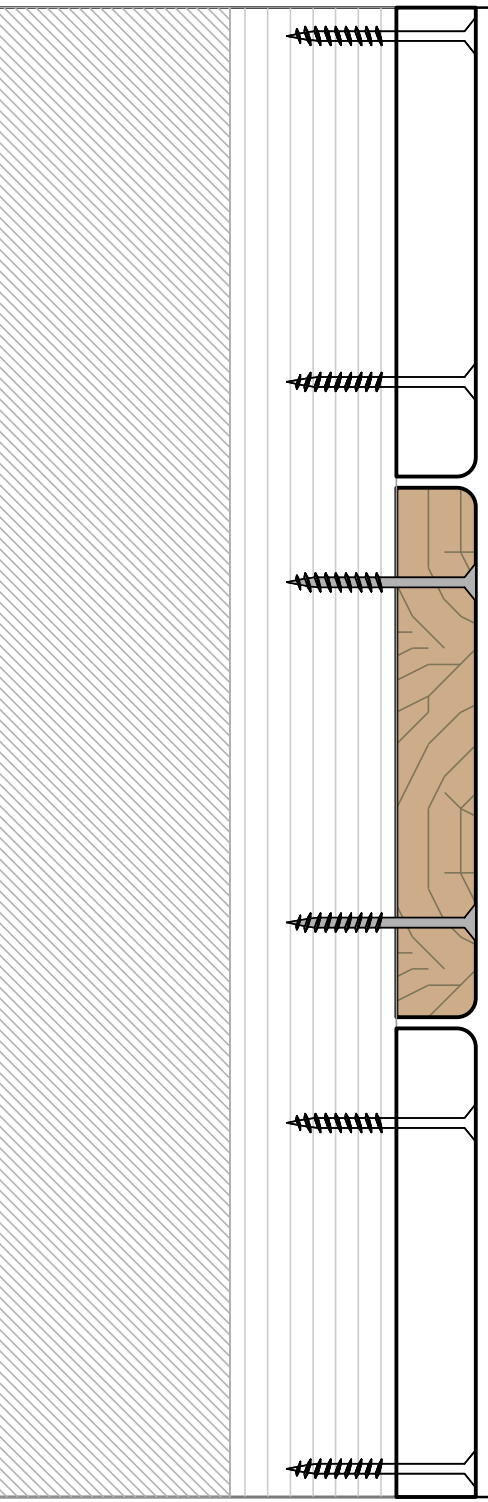
Essence :



Essence	Traitement	Épaisseur	Largeur	Longueur
DOUGLAS	non traité / HA - CL3	21mm	140mm	3/4/5m
	● - CL3	21mm	140mm	3/4/5m
	non traité / HA - CL3	27mm	140mm	3/4/5m
PIN	● - CL3	27mm	140mm	3/4/5m
	● - CL4	21mm	140mm	3/4/5m
	● - CL4	27mm	140mm	3/4/5m

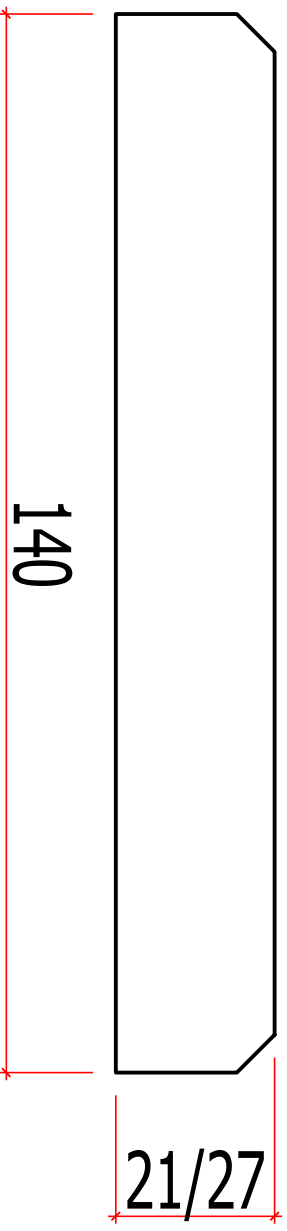
HA - Hors aubier (L'aubier est la partie tendre et blanche du bois.)

● - Traitement autoclave



# LAME 2 CHANFREINS

Essence :



Essence	Traitement	Épaisseur	Largeur	Longueur
DOUGLAS	non traité / HA - CL3	21mm	140mm	3/4/5m
	● - CL3	21mm	140mm	3/4/5m
	non traité / HA - CL3	27mm	140mm	3/4/5m
PIN	● - CL3	27mm	140mm	3/4/5m
	● - CL4	21mm	140mm	3/4/5m
	● - CL4	27mm	140mm	3/4/5m

HA - Hors aubier (L'aubier est la partie tendre et blanche du bois.)

● - Traitement autoclave

